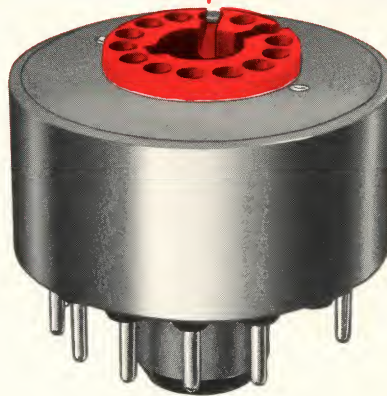


NEW

FROM POMONA ELECTRONICS:

COLOR CRT TEST ADAPTER

—for use with
Motorola 23EGP22,
RCA 25AP22, and
others with
similar 14BE
basing.



This single adapter will allow you to test both the new Motorola and RCA color tubes with your present test equipment.

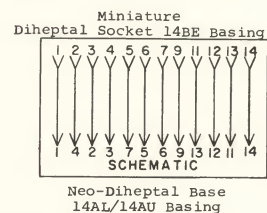
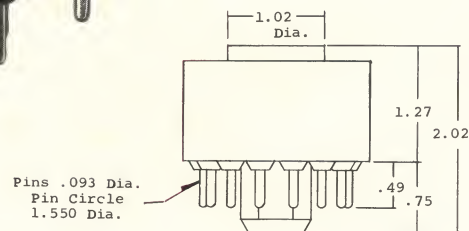
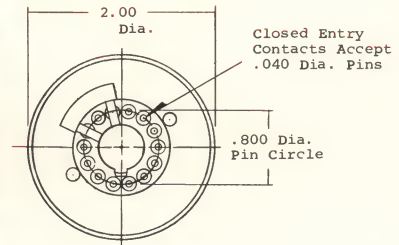
Keeps testers up to date—adapts miniature diheptal socket 14BE basing (used in these 2 tubes) to standard neo-diheptal 14AL/14AU basing (found on current color tube testers).

Features—provision for accepting bases equipped with spark gaps.

Rugged, compact, easy to use. Built to Pomona Electronics' high standards of quality in materials and workmanship.

MODEL 2276

NET \$5.95



POMONA ELECTRONICS CO., INC.

1500 East Ninth Street, Pomona, California 91769
Telephone (714) 623-3463

Distributed by: